



NATA LIGHTING CO.,LTD.
www.nata.cn
Email:info@nata.com
Tel:+86-750-3770000 Fax:+86-750-3771111
Address:380JinOu Road,GaoXin Zone,Jiang Men City,Guangdong,China

NT

Client:

LumCAT: 2-2679-L

Luminaire: 92.70.412.00

Report No: 2024228-B019

Ballast type: AC

Test No: 2024228-C019

Voltage(V): 35.480

LampCAT: CITIZEN CLU038 LES14.5

Current(A): 0.541

Lamp flux(lm): 2613.0

Power (W): 19.194

Number of Lamps: 1

PF: 0.000

Length(mm): 0

Width(mm): 0

Phm Type: C

Height(mm): 0

Photometric Results

Lumens(lm): 2209.85, Efficiency(%): 84.57% , Luminous Efficacy(lm/W): 115.13

Central intensity(cd): 7355.021, Maximum intensity(cd): 7355.021

Angle of maximum intensity: C=0.0 γ =0.0

Beam Angle(50%Imax): [C0/180]Total=24.0

[C90/270]Total=24.0

Field angle(10%Imax): [C0/180]Total=60.4

[C90/270]Total=60.4

Maximum s/h(1/2): C0_180=0.40 C90_270=0.40

Maximum s/h(1/4): C0_180=0.47 C90_270=0.47

Up flux rate of lamp(%): 0.00%

Down flux rate of lamp(%): 84.57%

Up flux rate of LUM(%): - -

Down flux rate of LUM(%): 100.00%

CIE Type : Direct lighting

Output flux ratio in π solid angle : 97.784%

Equipment: GMS1980
Temperature(°C): 25.0

Date: 2024/2/28
Humidity(%): 60.0%

Operator: NT07
Distance(m): 7.65

$\gamma(^{\circ})$	Average I(cd)	Zonal F(lm)	Sum F(lm)	Eff Flux(%)	Eff Sum(%)
0.0	7355.020	0.000	0	0.00%	0.00%
1.0	7293.864	7.009	7.009	0.27%	0.32%
2.0	7135.926	20.711	27.72	0.79%	1.25%
3.0	6888.303	33.541	61.262	1.28%	2.77%
4.0	6558.895	45.012	106.274	1.72%	4.81%
5.0	6191.520	54.852	161.125	2.10%	7.29%
6.0	5827.144	63.161	224.287	2.42%	10.15%
7.0	5466.718	70.101	294.387	2.68%	13.32%
8.0	5081.933	75.495	369.882	2.89%	16.74%
9.0	4704.975	79.318	449.2	3.04%	20.33%
10.0	4350.987	81.953	531.153	3.14%	24.04%
11.0	4000.364	83.447	614.6	3.19%	27.81%
12.0	3685.732	84.020	698.62	3.22%	31.61%
13.0	3373.369	83.774	782.394	3.21%	35.40%
14.0	3076.074	82.552	864.946	3.16%	39.14%
15.0	2827.427	81.046	945.992	3.10%	42.81%
16.0	2585.290	79.311	1025.303	3.04%	46.40%
17.0	2375.267	77.249	1102.553	2.96%	49.89%
18.0	2180.022	75.107	1177.659	2.87%	53.29%
19.0	2011.843	72.930	1250.589	2.79%	56.59%
20.0	1847.614	70.639	1321.228	2.70%	59.79%
21.0	1711.915	68.350	1389.578	2.62%	62.88%
22.0	1580.239	66.157	1455.735	2.53%	65.87%
23.0	1434.482	63.257	1518.992	2.42%	68.74%
24.0	1354.086	60.968	1579.96	2.33%	71.50%
25.0	1231.511	58.791	1638.751	2.25%	74.16%
26.0	1155.600	56.348	1695.099	2.16%	76.71%
27.0	1070.186	54.454	1749.554	2.08%	79.17%
28.0	969.220	51.633	1801.187	1.98%	81.51%
29.0	862.863	47.932	1849.12	1.83%	83.68%
30.0	759.403	43.801	1892.92	1.68%	85.66%
31.0	652.526	39.292	1932.212	1.50%	87.44%
32.0	555.261	34.602	1966.814	1.32%	89.00%
33.0	456.044	29.793	1996.608	1.14%	90.35%
34.0	369.306	24.978	2021.585	0.96%	91.48%
35.0	297.901	20.721	2042.306	0.79%	92.42%
36.0	249.752	17.437	2059.743	0.67%	93.21%
37.0	177.747	13.943	2073.686	0.53%	93.84%

$\gamma(^{\circ})$	Average I(cd)	Zonal F(lm)	Sum F(lm)	Eff Flux(%)	Eff Sum(%)
38.0	133.497	10.389	2084.075	0.40%	94.31%
39.0	93.000	7.731	2091.806	0.30%	94.66%
40.0	76.518	5.912	2097.718	0.23%	94.93%
41.0	66.408	5.090	2102.808	0.19%	95.16%
42.0	59.576	4.577	2107.385	0.18%	95.36%
43.0	54.477	4.225	2111.61	0.16%	95.55%
44.0	50.081	3.946	2115.556	0.15%	95.73%
45.0	46.562	3.714	2119.27	0.14%	95.90%
46.0	43.277	3.513	2122.784	0.13%	96.06%
47.0	40.300	3.324	2126.108	0.13%	96.21%
48.0	37.952	3.163	2129.271	0.12%	96.35%
49.0	35.713	3.025	2132.296	0.12%	96.49%
50.0	33.716	2.895	2135.191	0.11%	96.62%
51.0	31.895	2.776	2137.967	0.11%	96.75%
52.0	30.476	2.676	2140.643	0.10%	96.87%
53.0	29.291	2.600	2143.243	0.10%	96.99%
54.0	28.281	2.538	2145.78	0.10%	97.10%
55.0	27.542	2.492	2148.272	0.10%	97.21%
56.0	27.169	2.472	2150.745	0.09%	97.33%
57.0	27.074	2.480	2153.225	0.09%	97.44%
58.0	27.184	2.509	2155.734	0.10%	97.55%
59.0	27.447	2.554	2158.288	0.10%	97.67%
60.0	27.645	2.603	2160.891	0.10%	97.78%
61.0	27.586	2.636	2163.526	0.10%	97.90%
62.0	27.030	2.632	2166.158	0.10%	98.02%
63.0	26.013	2.580	2168.738	0.10%	98.14%
64.0	24.579	2.483	2171.22	0.10%	98.25%
65.0	22.912	2.350	2173.571	0.09%	98.36%
66.0	21.075	2.195	2175.765	0.08%	98.46%
67.0	19.429	2.037	2177.802	0.08%	98.55%
68.0	18.010	1.897	2179.699	0.07%	98.64%
69.0	17.125	1.792	2181.491	0.07%	98.72%
70.0	16.474	1.726	2183.217	0.07%	98.79%
71.0	16.013	1.679	2184.896	0.06%	98.87%
72.0	15.640	1.646	2186.542	0.06%	98.95%
73.0	15.252	1.615	2188.157	0.06%	99.02%
74.0	14.872	1.584	2189.741	0.06%	99.09%
75.0	14.294	1.541	2191.282	0.06%	99.16%

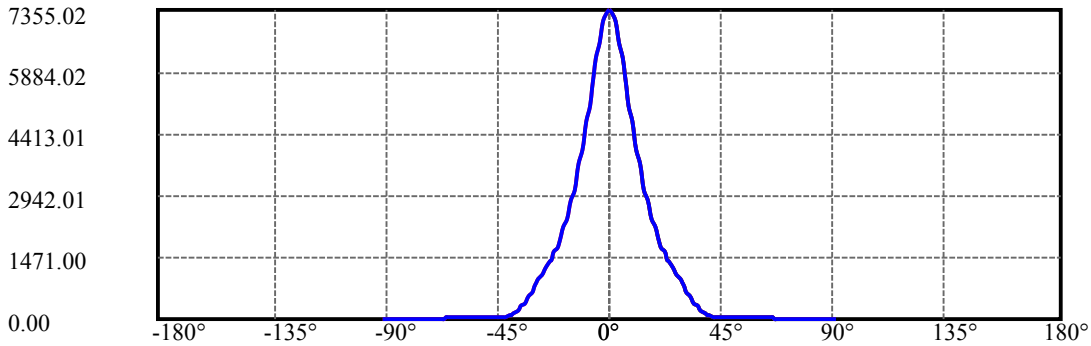
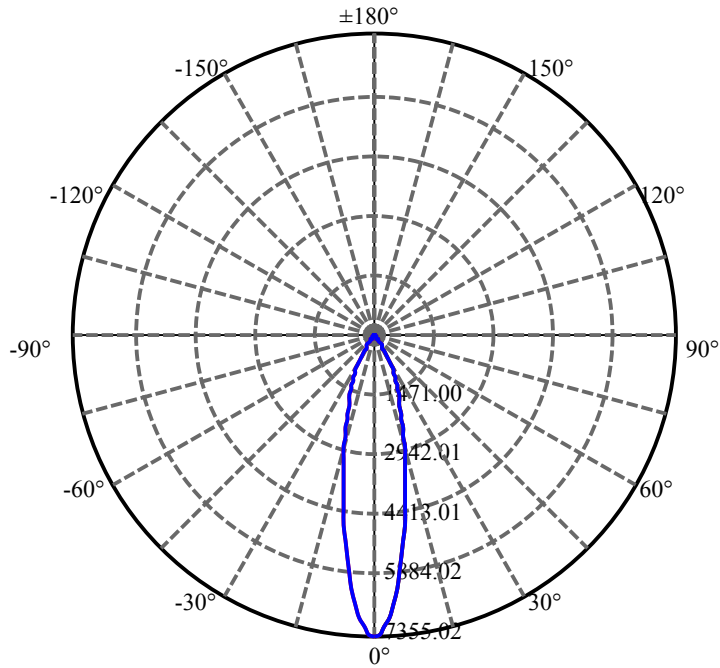
$\gamma(^{\circ})$	Average I(cd)	Zonal F(lm)	Sum F(lm)	Eff Flux(%)	Eff Sum(%)
76.0	13.811	1.492	2192.774	0.06%	99.23%
77.0	13.387	1.450	2194.224	0.06%	99.29%
78.0	12.985	1.412	2195.635	0.05%	99.36%
79.0	12.597	1.374	2197.01	0.05%	99.42%
80.0	12.180	1.336	2198.346	0.05%	99.48%
81.0	11.814	1.298	2199.643	0.05%	99.54%
82.0	11.412	1.260	2200.903	0.05%	99.59%
83.0	11.039	1.220	2202.123	0.05%	99.65%
84.0	10.710	1.185	2203.308	0.05%	99.70%
85.0	10.417	1.153	2204.461	0.04%	99.76%
86.0	10.117	1.122	2205.584	0.04%	99.81%
87.0	9.883	1.095	2206.678	0.04%	99.86%
88.0	9.685	1.072	2207.75	0.04%	99.90%
89.0	9.598	1.057	2208.807	0.04%	99.95%
90.0	9.510	1.048	2209.855	0.04%	100.00%

ZONAL LUMEN SUMMARY

Zone	Lumens	%Lamp	%Fixt
0-30	1892.92	72.44%	85.66%
0-40	2097.72	80.28%	94.93%
0-60	2160.89	82.70%	97.78%
0-90	2208.81	84.53%	99.95%
0-120	2208.81	84.53%	99.95%
0-180	2209.85	84.57%	100.00%
60-90	47.92	1.83%	2.17%
90-120	0.00	0.00%	0.00%
90-130	0.00	0.00%	0.00%
90-150	0.00	0.00%	0.00%
90-180	0.00	0.00%	0.00%
0-27.36	1767.88	67.66%	80.00%

ZONAL LUMEN SUMMARY

0-10	531.15
10-20	790.08
20-30	571.69
30-40	204.80
40-50	37.47
50-60	25.70
60-70	22.33
70-80	15.13
80-90	10.46
90-100	0.00
100-110	0.00
110-120	0.00
120-130	0.00
130-140	0.00
140-150	0.00
150-160	0.00
160-170	0.00
170-180	0.00



C0(Max): —————

C0/C180: —————

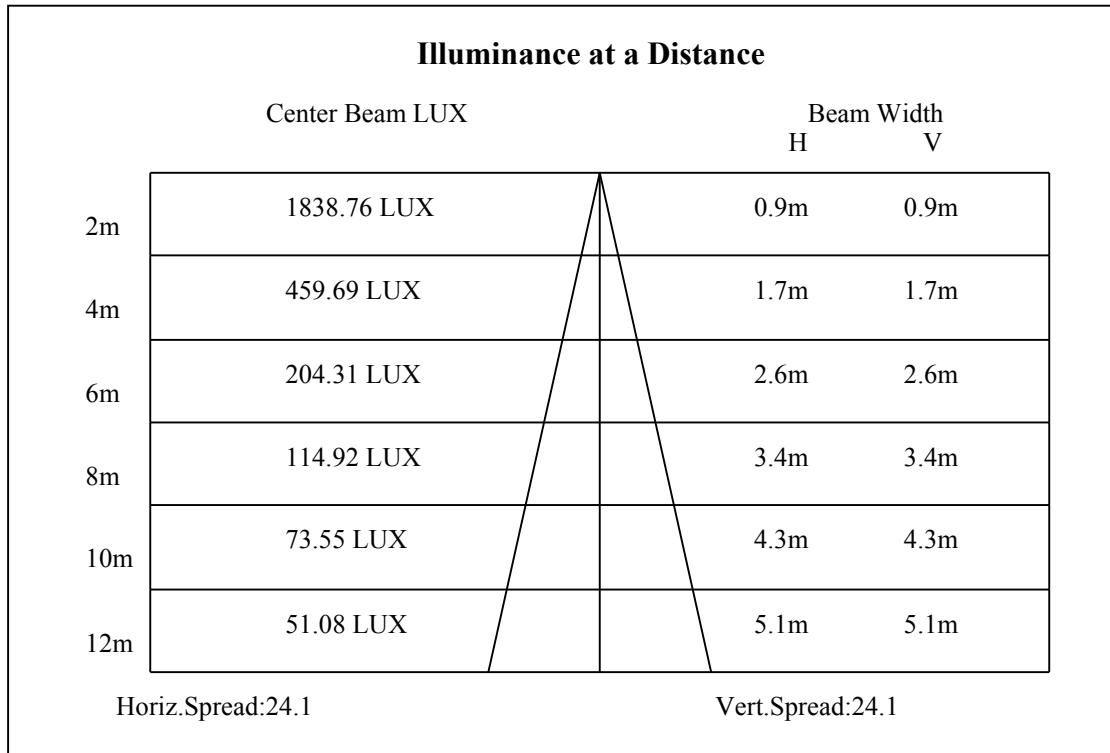
C90/C270: —————

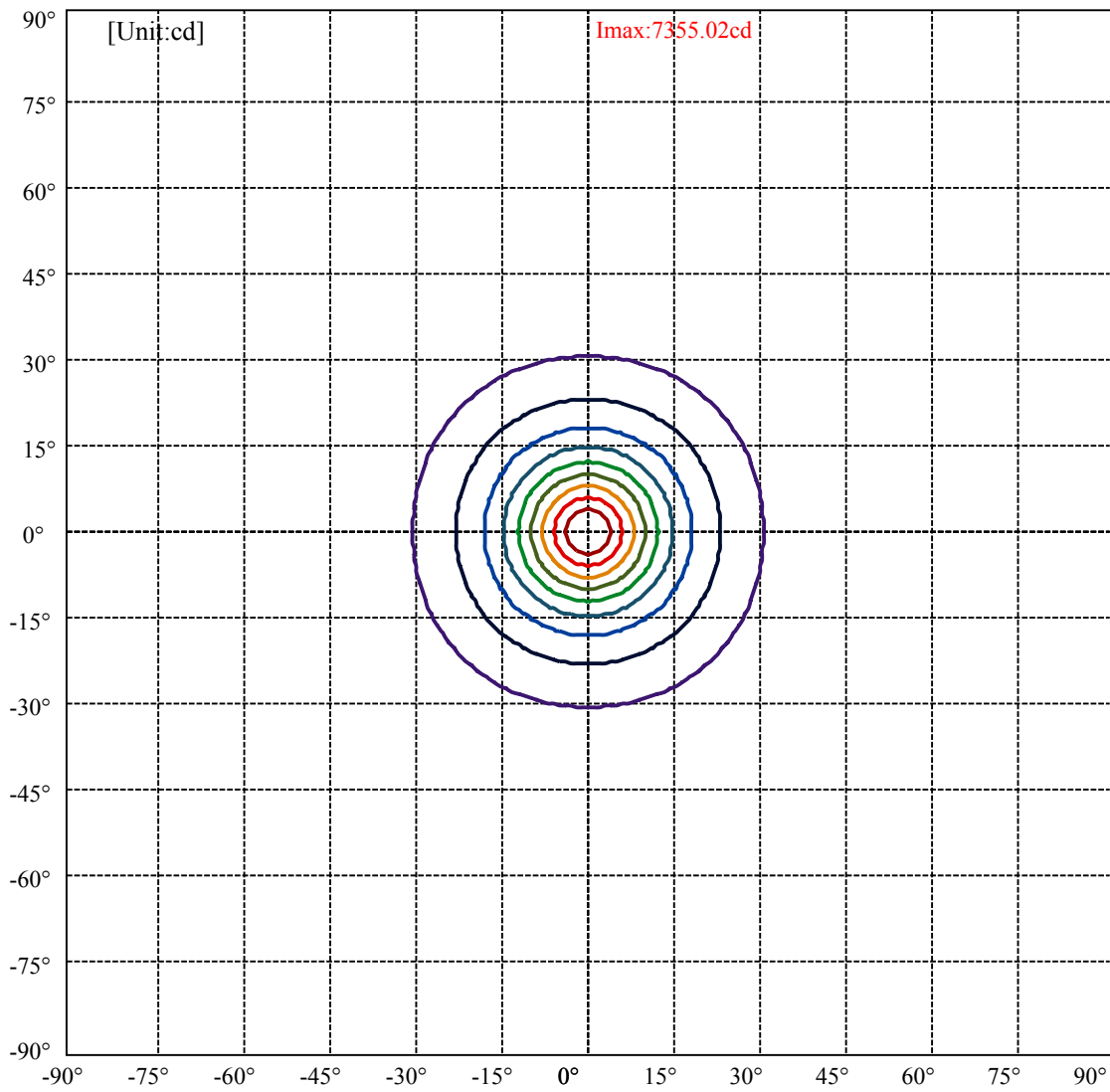
Field angle(10%Imax):C0/180Left:30.2 Right:30.2

:C90/270Left:30.2 Right:30.2

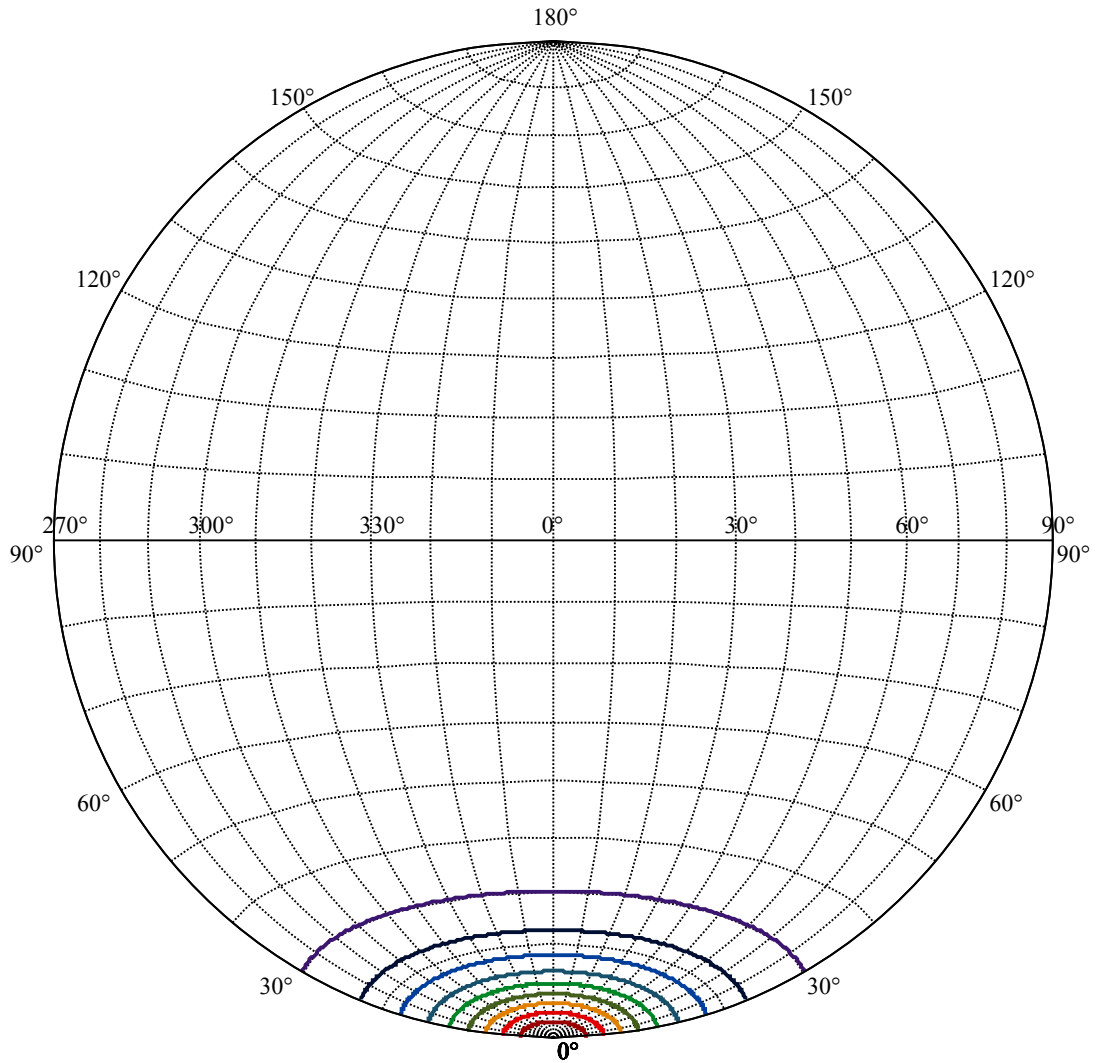
Beam Angle(50%Imax):C0/180Left:12.0 Right:12.0

:C90/270Left:12.0 Right:12.0





(10%Imax) 735.502	—
(20%Imax) 1471	—
(30%Imax) 2206.51	—
(40%Imax) 2942.01	—
(50%Imax) 3677.51	—
(60%Imax) 4413.01	—
(70%Imax) 5148.51	—
(80%Imax) 5884.02	—
(90%Imax) 6619.52	—



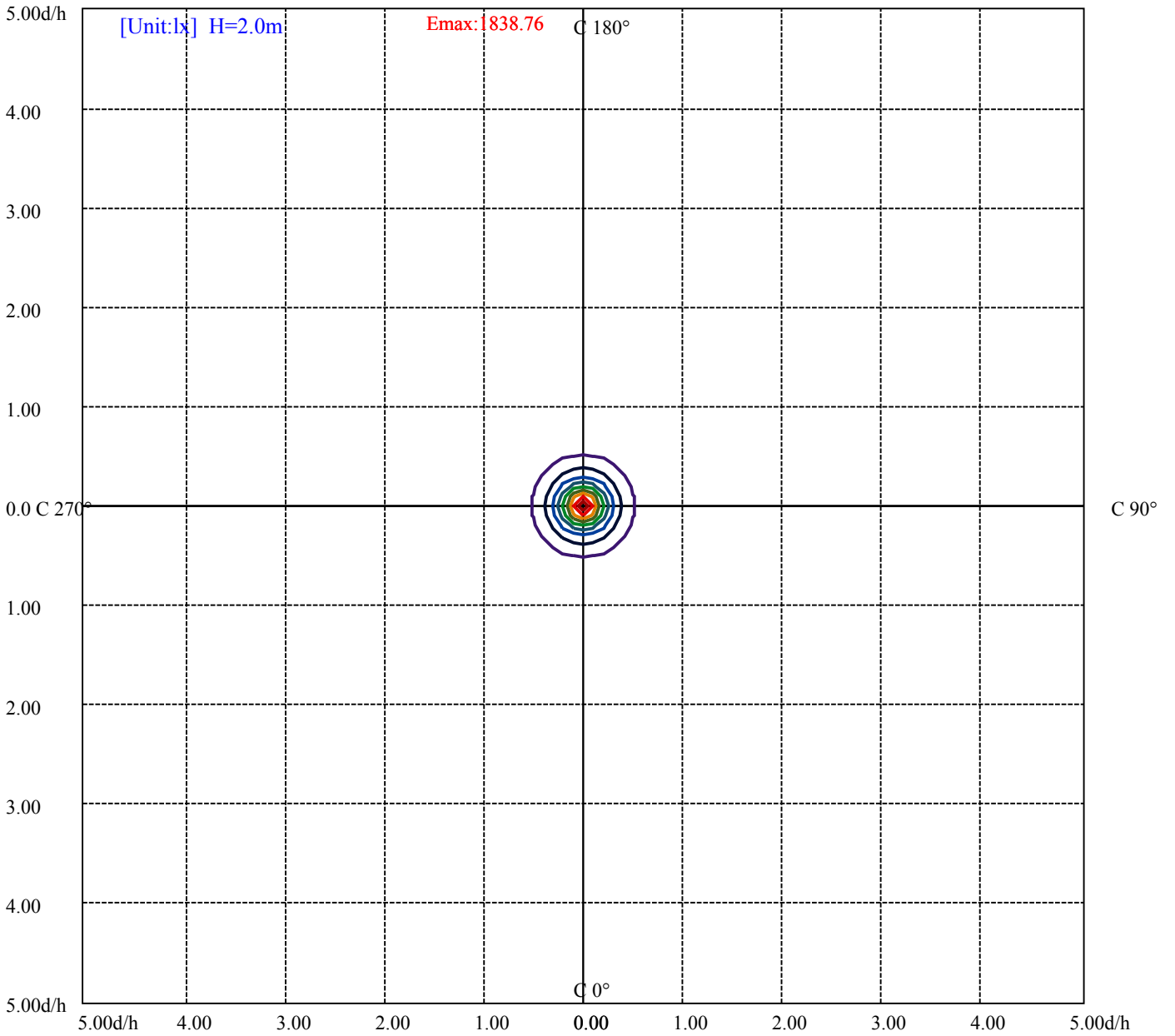
House

[Unit:cd]

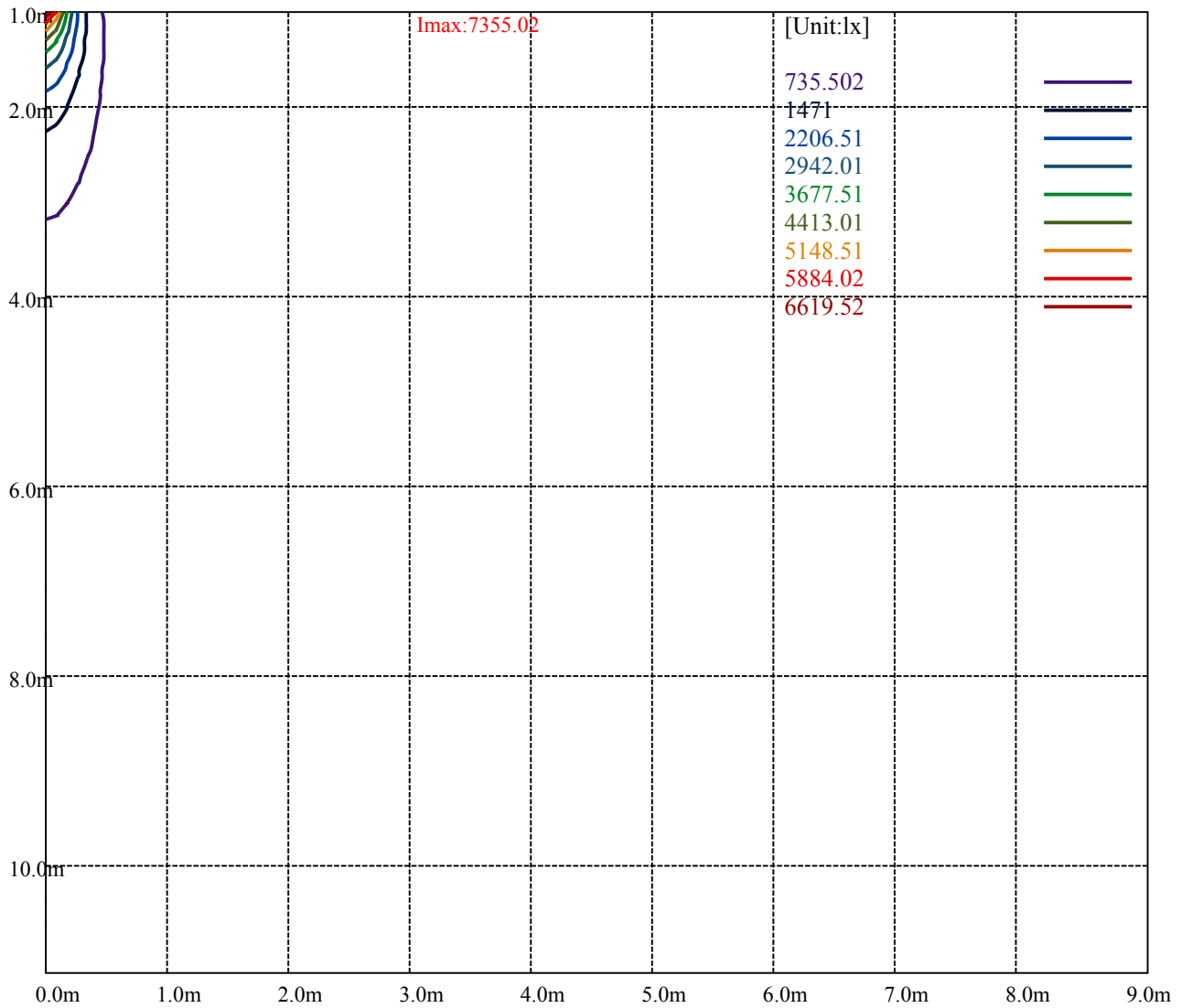
Road

I_{max}:7355.02

(10%I _{max}) 735.502	—
(20%I _{max}) 1471	—
(30%I _{max}) 2206.51	—
(40%I _{max}) 2942.01	—
(50%I _{max}) 3677.51	—
(60%I _{max}) 4413.01	—
(70%I _{max}) 5148.51	—
(80%I _{max}) 5884.02	—
(90%I _{max}) 6619.52	—



- (10%Emax) 183.8752
- (20%Emax) 367.75
- (30%Emax) 551.625
- (40%Emax) 735.5
- (50%Emax) 919.3775
- (60%Emax) 1103.252
- (70%Emax) 1287.127
- (80%Emax) 1471.002
- (90%Emax) 1654.877



Luminance Table

γ	45	50	55	60	65	70	75	80	85
C0	0	0	0	0	0	0	0	0	0
C45	0	0	0	0	0	0	0	0	0
C90	0	0	0	0	0	0	0	0	0

L(Hor)(65)	L(Ver)(65)	L45(65)	L(Hor)(75)	L(Ver)(75)	L45(75)	L(Hor)(85)	L(Ver)(85)	L45(85)
0	0	0	0	0	0	0	0	0

Glare Table

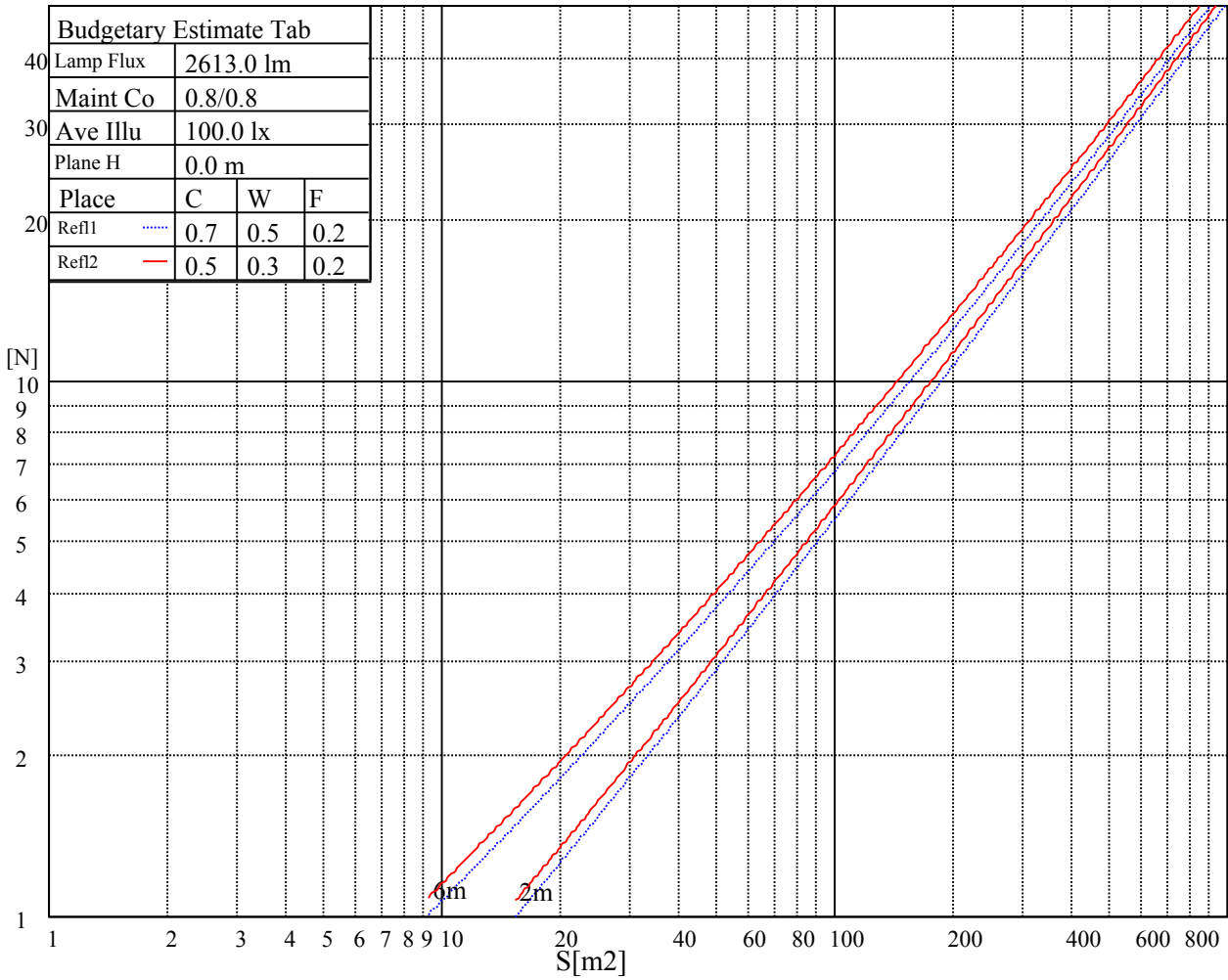
Glare	Quality	Service Values Illuminance(lx)							
1.15	A	2000	1000	500	<=300				
1.5	B		2000	1000	500	<=300			
1.85	C			2000	1000	500	<=300		
2.2	D				2000	1000	500	<=300	
2.55	E					2000	1000	500	<=300
		a	b	c	d	e	f	g	h

Luminance Limiting Curve

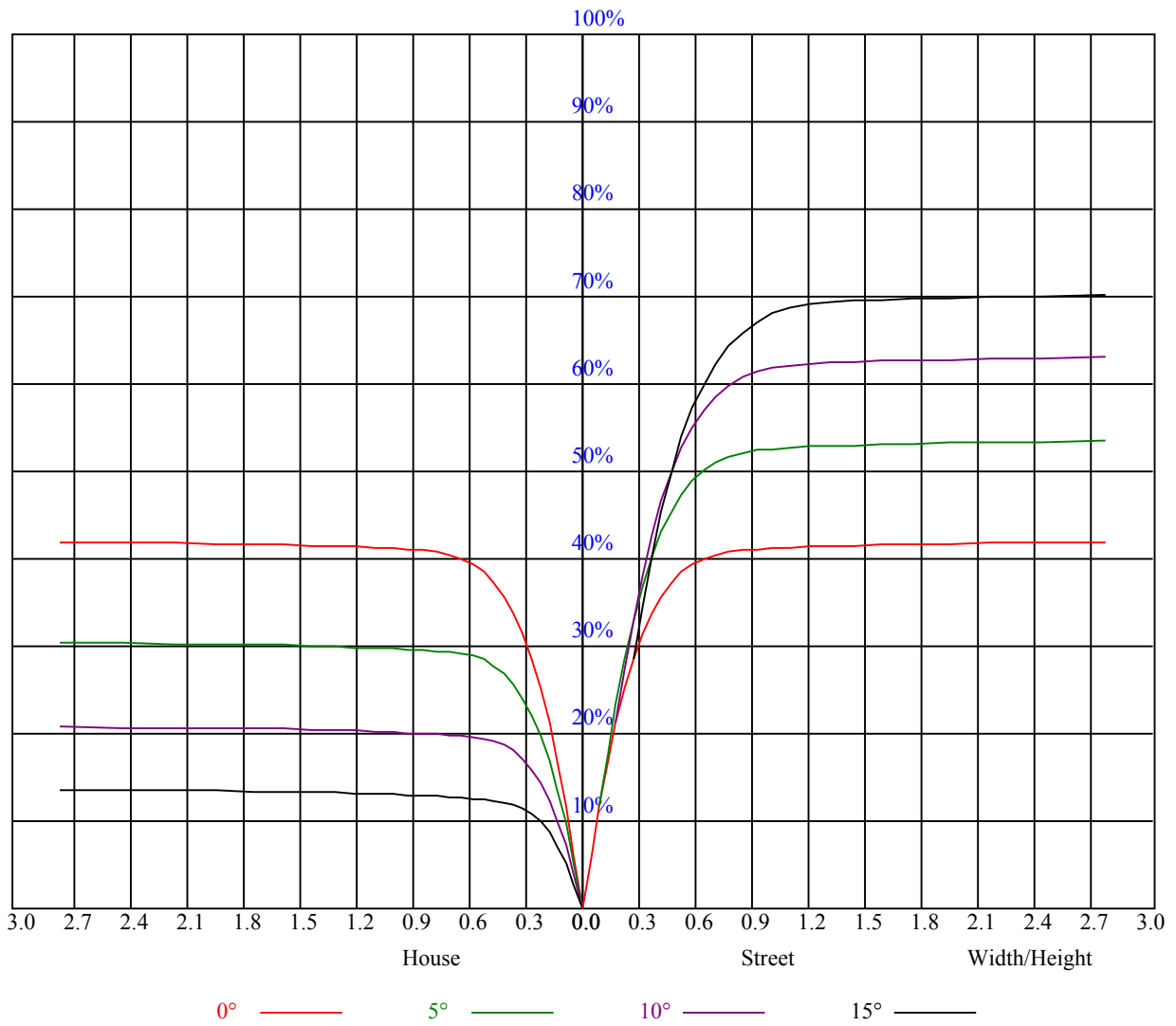


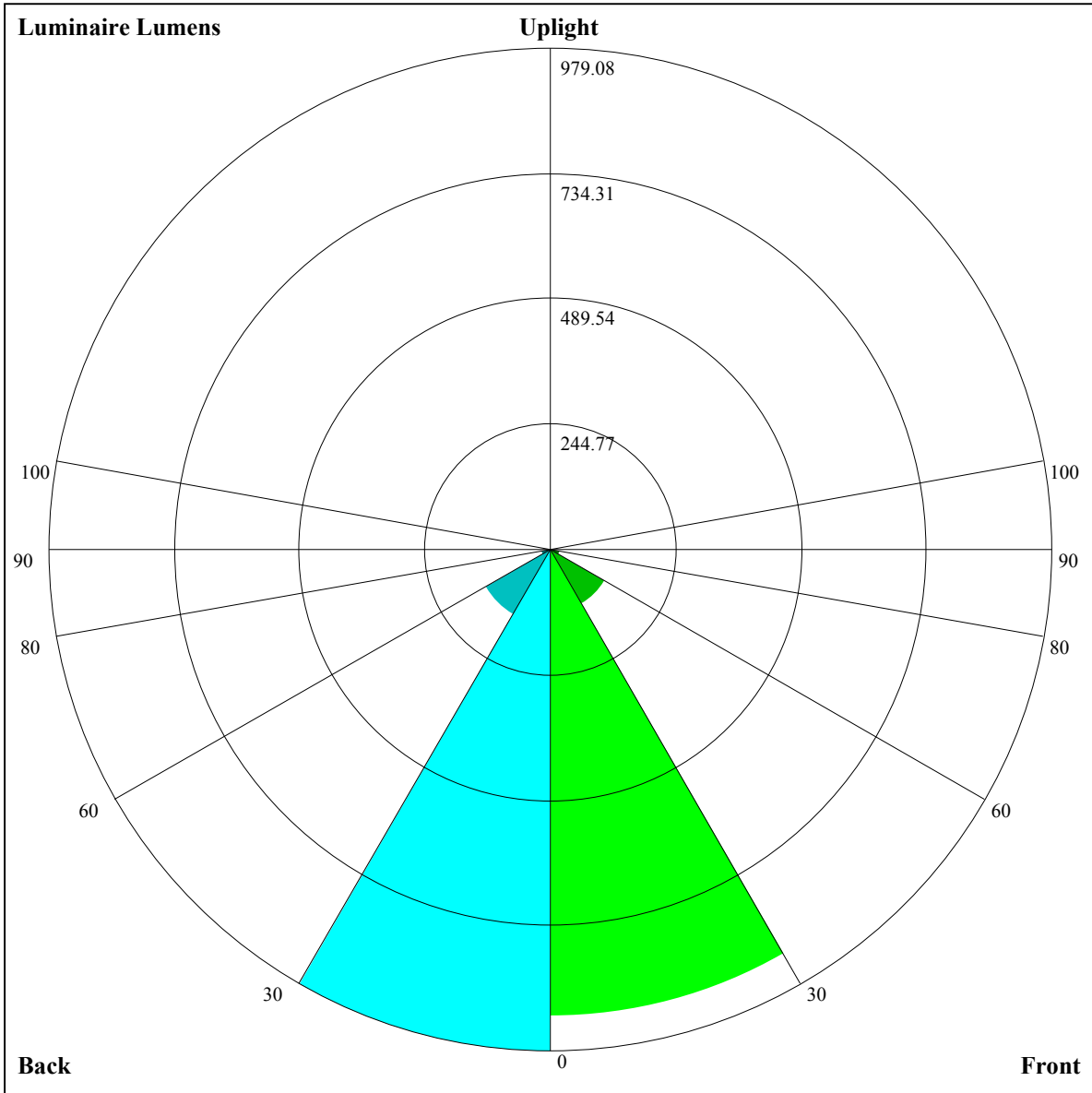
Illumination assessment according UGR											
Rf of Ceiling	70	70	50	50	30	70	70	50	50	30	
Rf of Wall	50	30	50	30	30	50	30	50	30	30	
Rf of Floor	20	20	20	20	20	20	20	20	20	20	
Room dimensions		Viewed crosswise					Viewed endwise				
X	Y										
2H	2H	非数字	非数字	非数字	非数字	非数字	非数字	非数字	非数字	非数字	
	3H	非数字	非数字	非数字	非数字	非数字	非数字	非数字	非数字	非数字	
	4H	非数字	非数字	非数字	非数字	非数字	非数字	非数字	非数字	非数字	
	6H	非数字	非数字	非数字	非数字	非数字	非数字	非数字	非数字	非数字	
	8H	非数字	非数字	非数字	非数字	非数字	非数字	非数字	非数字	非数字	
4H	12H	非数字	非数字	非数字	非数字	非数字	非数字	非数字	非数字	非数字	
	2H	非数字	非数字	非数字	非数字	非数字	非数字	非数字	非数字	非数字	
	3H	非数字	非数字	非数字	非数字	非数字	非数字	非数字	非数字	非数字	
	4H	非数字	非数字	非数字	非数字	非数字	非数字	非数字	非数字	非数字	
	6H	非数字	非数字	非数字	非数字	非数字	非数字	非数字	非数字	非数字	
8H	8H	非数字	非数字	非数字	非数字	非数字	非数字	非数字	非数字	非数字	
	12H	非数字	非数字	非数字	非数字	非数字	非数字	非数字	非数字	非数字	
	4H	非数字	非数字	非数字	非数字	非数字	非数字	非数字	非数字	非数字	
	6H	非数字	非数字	非数字	非数字	非数字	非数字	非数字	非数字	非数字	
	8H	非数字	非数字	非数字	非数字	非数字	非数字	非数字	非数字	非数字	
12H	12H	非数字	非数字	非数字	非数字	非数字	非数字	非数字	非数字	非数字	
	4H	非数字	非数字	非数字	非数字	非数字	非数字	非数字	非数字	非数字	
	6H	非数字	非数字	非数字	非数字	非数字	非数字	非数字	非数字	非数字	
	8H	非数字	非数字	非数字	非数字	非数字	非数字	非数字	非数字	非数字	
Variation with the observer position at spacings:											
S = 1.0H		非数字/非数字					非数字/非数字				
S = 1.5H		非数字/非数字					非数字/非数字				
S = 2.0H		非数字/非数字					非数字/非数字				
Standard tables:		BK0					BK0				
Uncorrected UGR		负无穷大					负无穷大				

UGR calculation is based on CIE Publ. 117 ,S/H = 0.25



RHOCC	80			70			50			30			10			0
RHOW	50	30	10	50	30	10	50	30	10	50	30	10	50	30	10	0
RCR	COEFFICIENTS OF UTILIZATION RHOF=20 CU															
0	1.01	1.01	1.01	0.98	0.98	0.98	0.94	0.94	0.94	0.90	0.90	0.90	0.86	0.86	0.86	0.85
1	0.94	0.92	0.91	0.92	0.91	0.89	0.89	0.88	0.86	0.86	0.85	0.84	0.83	0.82	0.81	0.80
2	0.89	0.86	0.83	0.87	0.84	0.82	0.85	0.82	0.80	0.82	0.80	0.79	0.80	0.78	0.77	0.76
3	0.84	0.80	0.77	0.83	0.79	0.77	0.81	0.78	0.75	0.79	0.76	0.74	0.77	0.75	0.73	0.72
4	0.80	0.76	0.72	0.79	0.75	0.72	0.77	0.74	0.71	0.75	0.73	0.70	0.74	0.71	0.70	0.68
5	0.76	0.72	0.68	0.75	0.71	0.68	0.74	0.70	0.68	0.72	0.69	0.67	0.71	0.68	0.66	0.65
6	0.72	0.68	0.65	0.72	0.68	0.65	0.70	0.67	0.64	0.69	0.66	0.64	0.68	0.66	0.63	0.62
7	0.69	0.65	0.62	0.69	0.65	0.62	0.68	0.64	0.61	0.67	0.63	0.61	0.66	0.63	0.61	0.60
8	0.66	0.62	0.59	0.66	0.62	0.59	0.65	0.61	0.59	0.64	0.61	0.59	0.63	0.61	0.58	0.57
9	0.64	0.60	0.57	0.63	0.59	0.57	0.63	0.59	0.56	0.62	0.59	0.56	0.61	0.58	0.56	0.55
10	0.61	0.57	0.54	0.61	0.57	0.54	0.60	0.57	0.54	0.60	0.56	0.54	0.59	0.56	0.54	0.53





Luminaire Lumens:

FL=912.64,FM=123.61,FH=18.3,FVH=5.7

BL=979.08,BM=147.05,BH=19.17,BVH=5.83

UL=0,UH=0

BUG Rating:B2-U0-G0

Intensity data(cd)

C/γ(°)	0.0	1.0	2.0	3.0	4.0	5.0	6.0	7.0	8.0
0.0	7267.38	7025.10	6727.22	6392.47	5942.43	5585.45	5141.85	4794.22	4451.87
45.0	7436.51	7294.30	7061.97	6767.02	6346.24	5992.76	5641.04	5200.37	4854.50
90.0	7266.21	6958.97	6660.50	6331.02	5982.23	5552.67	5208.56	4865.03	4526.19
135.0	7449.97	7320.64	7102.93	6826.71	6426.41	6084.06	5739.36	5394.08	4963.94
180.0	7267.38	7438.27	7442.95	7329.42	7121.08	6770.53	6453.33	6115.07	5757.50
225.0	7436.51	7445.29	7321.81	7102.93	6819.10	6412.37	6065.33	5710.10	5260.65
270.0	7266.21	7425.98	7461.09	7350.48	7136.29	6775.79	6451.58	6104.54	5653.92
315.0	7449.97	7442.36	7308.93	7006.37	6697.37	6358.53	5916.10	5550.33	5186.91
360.0	7267.38	7025.10	6727.22	6392.47	5942.43	5585.45	5141.85	4794.22	4451.87
C/γ(°)	9.0	10.0	11.0	12.0	13.0	14.0	15.0	16.0	17.0
0.0	4043.96	3732.62	3437.67	3163.20	2854.79	2631.82	2425.82	2237.37	2033.72
45.0	4431.97	4107.75	3794.66	3426.55	3152.08	2900.43	2669.85	2409.43	2226.25
90.0	4194.37	3801.09	3503.22	3224.65	2909.21	2682.73	2421.13	2237.96	2074.68
135.0	4627.43	4297.37	3902.92	3603.29	3322.38	2998.17	2764.66	2498.38	2312.87
180.0	5305.71	4955.74	4534.38	4205.49	3881.27	3517.26	3247.47	2996.41	2762.91
225.0	4906.00	4560.72	4144.62	3829.19	3534.82	3192.46	2940.23	2708.48	2497.80
270.0	5298.10	4950.48	4609.88	4272.20	3866.05	3559.40	3272.64	2946.67	2706.14
315.0	4832.26	4402.12	4075.57	3761.30	3466.35	3126.33	2877.61	2647.62	2387.78
360.0	4043.96	3732.62	3437.67	3163.20	2854.79	2631.82	2425.82	2237.37	2033.72
C/γ(°)	18.0	19.0	20.0	21.0	22.0	23.0	24.0	25.0	26.0
0.0	1885.65	1752.81	1600.06	1488.29	1387.04	1159.62	1159.62	1091.44	975.75
45.0	2065.32	1918.43	1753.39	1632.84	1523.40	1398.75	1307.45	1222.01	1114.33
90.0	1891.51	1760.42	1640.44	1530.42	1406.94	1167.64	1167.64	1146.22	1028.01
135.0	2146.08	1993.92	1821.86	1697.21	1583.68	1481.26	1361.29	1274.68	1188.65
180.0	2501.31	2310.53	2130.28	1977.53	1810.16	1686.09	1569.05	1433.86	1341.98
225.0	2260.20	2086.39	1931.89	1792.02	1636.93	1523.98	1423.91	1160.85	1160.85
270.0	2488.44	2240.89	2060.05	1869.85	1738.76	1613.52	1497.06	1373.58	1285.80
315.0	2201.67	2031.37	1842.93	1707.16	1555.00	1444.98	1346.66	1149.44	1149.44
360.0	1885.65	1752.81	1600.06	1488.29	1387.04	1159.62	1159.62	1091.44	975.75
C/γ(°)	27.0	28.0	29.0	30.0	31.0	32.0	33.0	34.0	35.0
0.0	878.48	778.64	657.85	563.69	469.94	381.92	285.77	220.04	164.68
45.0	1015.42	912.42	788.94	691.79	596.40	503.35	397.43	320.18	302.03
90.0	930.74	830.67	734.81	614.08	520.97	434.94	335.22	266.22	189.50
135.0	1073.36	972.12	870.87	747.39	649.66	555.44	443.07	362.90	306.72
180.0	1256.54	1151.20	1059.90	965.09	837.52	736.27	634.44	513.89	422.59
225.0	1139.78	1025.31	925.94	825.93	700.28	602.66	508.85	401.64	325.21
270.0	1204.45	1118.42	999.62	900.13	800.06	677.16	583.53	492.23	386.89
315.0	1062.71	964.98	864.96	767.11	645.39	550.35	460.05	377.35	285.59
360.0	878.48	778.64	657.85	563.69	469.94	381.92	285.77	220.04	164.68
C/γ(°)	36.0	37.0	38.0	39.0	40.0	41.0	42.0	43.0	44.0
0.0	121.61	87.20	73.09	63.97	57.70	52.61	47.58	44.24	41.26
45.0	302.03	122.72	91.70	75.44	66.25	59.93	53.72	49.74	46.41
90.0	139.63	102.47	78.65	70.99	64.20	58.41	53.84	49.16	45.82
135.0	306.72	148.82	110.72	88.49	76.90	68.30	62.33	57.41	53.26
180.0	341.83	302.62	302.62	139.11	106.39	85.50	73.21	66.60	59.40
225.0	254.22	193.83	132.26	98.90	80.47	71.34	63.50	58.17	52.73
270.0	311.98	311.98	168.72	122.60	90.89	72.45	65.66	59.40	54.37
315.0	219.99	152.33	110.20	84.51	69.35	62.74	56.77	51.09	47.40
360.0	121.61	87.20	73.09	63.97	57.70	52.61	47.58	44.24	41.26

Intensity data(cd)

C/γ(°)	45.0	46.0	47.0	48.0	49.0	50.0	51.0	52.0	53.0
0.0	38.62	35.76	33.71	31.95	30.43	28.85	27.74	26.92	26.10
45.0	43.42	40.15	37.75	35.58	33.71	31.54	30.14	28.97	27.97
90.0	42.90	39.68	37.45	35.46	33.18	31.72	30.14	29.09	28.27
135.0	48.63	45.41	41.90	39.39	37.10	34.59	32.89	31.37	30.20
180.0	55.07	51.32	47.23	44.30	41.67	39.27	36.64	34.70	32.95
225.0	49.22	46.17	42.72	40.20	37.92	35.87	33.53	32.01	30.61
270.0	50.33	46.17	43.19	40.50	37.51	35.41	33.53	31.49	30.08
315.0	44.30	41.55	38.45	36.23	34.18	32.48	30.55	29.26	28.15
360.0	38.62	35.76	33.71	31.95	30.43	28.85	27.74	26.92	26.10
C/γ(°)	54.0	55.0	56.0	57.0	58.0	59.0	60.0	61.0	62.0
0.0	25.81	25.63	25.93	26.39	26.86	27.21	26.98	26.34	25.05
45.0	27.10	26.57	26.34	26.51	26.80	27.45	27.68	27.39	26.45
90.0	27.80	27.39	27.51	27.80	28.09	28.32	27.97	27.27	25.57
135.0	28.97	28.38	27.97	27.86	28.09	28.27	28.44	28.09	27.33
180.0	31.54	30.02	29.03	28.38	27.92	27.86	28.09	28.56	28.79
225.0	29.44	28.27	27.62	27.21	27.27	27.45	27.97	28.32	28.21
270.0	28.56	27.62	26.92	26.45	26.16	26.39	26.74	27.15	27.56
315.0	27.04	26.45	26.04	25.98	26.28	26.63	27.27	27.56	27.27
360.0	25.81	25.63	25.93	26.39	26.86	27.21	26.98	26.34	25.05
C/γ(°)	63.0	64.0	65.0	66.0	67.0	68.0	69.0	70.0	71.0
0.0	23.12	21.19	19.43	17.97	16.62	15.98	15.39	15.16	14.92
45.0	25.05	23.47	21.59	19.55	18.14	17.09	16.44	16.21	16.21
90.0	23.99	22.12	20.01	18.55	17.56	17.09	17.15	16.97	16.39
135.0	25.69	24.11	22.30	20.13	18.67	17.44	16.62	15.86	15.39
180.0	28.44	27.74	26.34	24.76	22.77	20.48	18.96	17.73	16.74
225.0	27.74	26.22	24.64	22.71	20.83	18.79	17.67	16.91	16.50
270.0	27.39	26.92	25.75	23.76	21.83	19.61	18.20	17.26	16.74
315.0	26.69	24.87	23.23	21.19	19.02	17.62	16.56	15.68	15.22
360.0	23.12	21.19	19.43	17.97	16.62	15.98	15.39	15.16	14.92
C/γ(°)	72.0	73.0	74.0	75.0	76.0	77.0	78.0	79.0	80.0
0.0	14.63	14.46	14.34	13.58	13.05	12.64	12.23	11.76	11.35
45.0	15.98	15.39	14.98	14.40	13.93	13.52	12.99	12.47	12.06
90.0	15.86	15.27	14.81	14.16	13.46	13.05	12.64	12.17	11.76
135.0	14.98	14.63	14.28	13.93	13.58	13.23	12.82	12.52	12.06
180.0	16.39	16.21	15.92	15.22	14.57	13.99	13.64	13.28	12.82
225.0	16.27	15.86	15.33	14.81	14.34	13.81	13.34	13.05	12.58
270.0	16.33	15.80	15.22	14.51	14.10	13.81	13.46	13.05	12.76
315.0	14.69	14.40	14.10	13.75	13.46	13.05	12.76	12.47	12.06
360.0	14.63	14.46	14.34	13.58	13.05	12.64	12.23	11.76	11.35
C/γ(°)	81.0	82.0	83.0	84.0	85.0	86.0	87.0	88.0	89.0
0.0	11.06	10.71	10.48	10.30	9.95	9.77	9.60	9.48	9.54
45.0	11.70	11.18	10.77	10.42	10.24	9.89	9.71	9.54	9.48
90.0	11.29	11.06	10.65	10.36	10.01	9.77	9.60	9.48	9.48
135.0	11.65	11.35	10.94	10.71	10.36	10.01	9.83	9.66	9.54
180.0	12.47	11.94	11.53	11.18	10.89	10.59	10.30	10.01	9.83
225.0	12.23	11.82	11.47	10.89	10.65	10.30	9.95	9.77	9.60
270.0	12.41	11.94	11.47	11.12	10.77	10.42	10.12	9.83	9.71
315.0	11.70	11.29	11.00	10.71	10.48	10.18	9.95	9.71	9.60
360.0	11.06	10.71	10.48	10.30	9.95	9.77	9.60	9.48	9.54

Intensity data(cd)

C/γ(°)	90.0
0.0	9.54
45.0	9.48
90.0	9.48
135.0	9.48
180.0	9.60
225.0	9.48
270.0	9.54
315.0	9.48
360.0	9.54